

A. F. PARKER

48+75 East Bank under River

49+65 NTS fence

50 O Hub

52

52+41 NTS mine fence

52+68 West bank Slough

53+28 East Bank Slough

53+66.20 S 70° E 1/4 or 2/4

55 O Hub

55+76 cross NTS Road

56 cross NTS Road

56+70 O Hub

Saturday Am. Oct 26th 1879

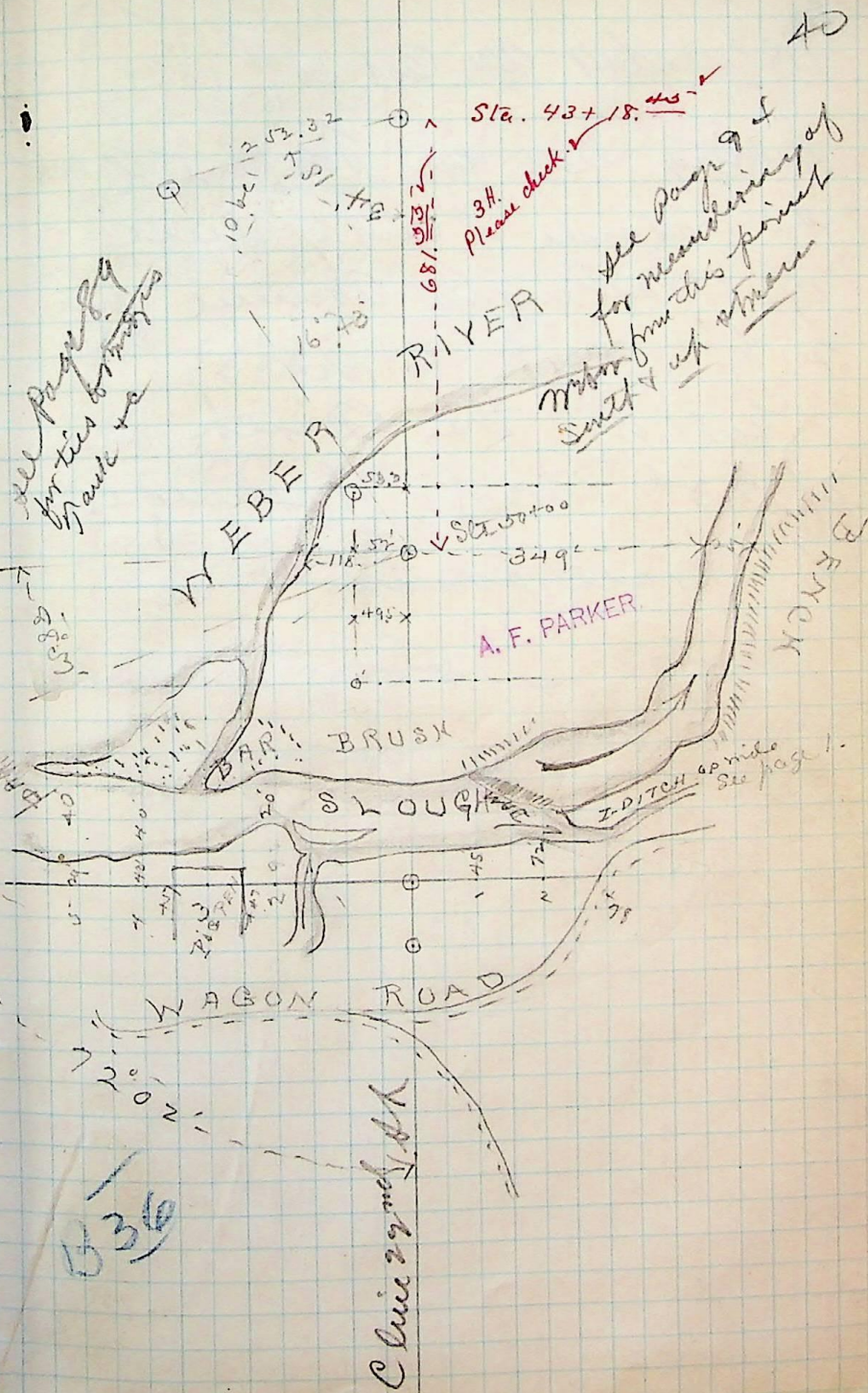
56+70 O Hub

57+95 East rail & R.C. S 74 N Gauge = last of the line

West Sm. by perpendicular
* U.C. N.A. BB/D ST
most 22 ft perpendicular
to wagon bridge.

WAGON ROAD

B36



Sta. 43+18.45
3H. Please check v

see page 9
for measuring of
station from this point
south up stream

A. F. PARKER

Cline

B36